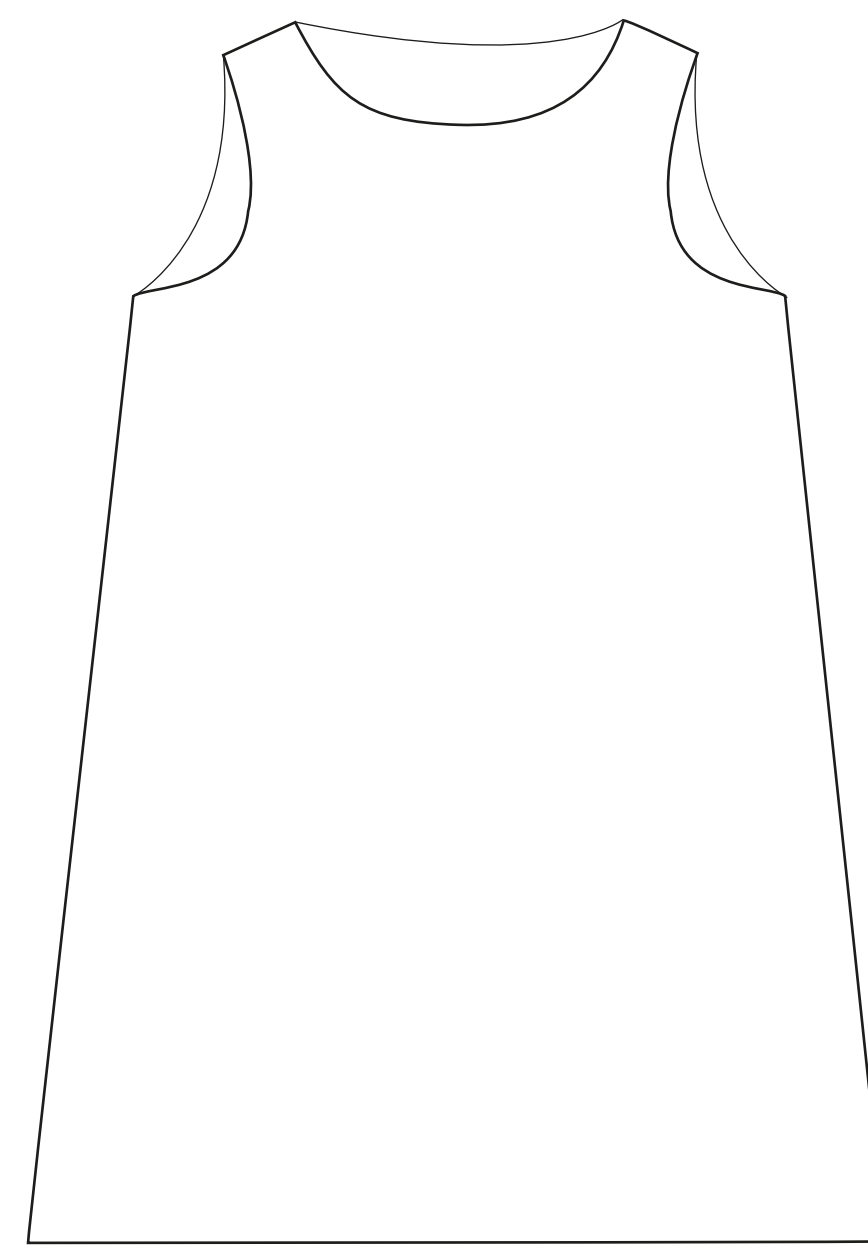


JUSTE UNE
IMPRESSION

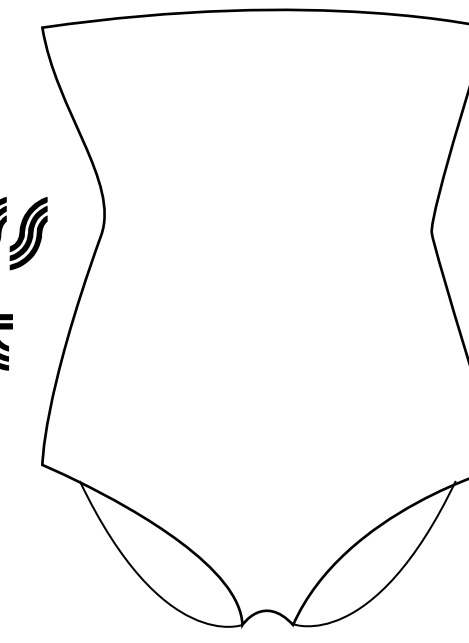
Fashion Design

just print it!

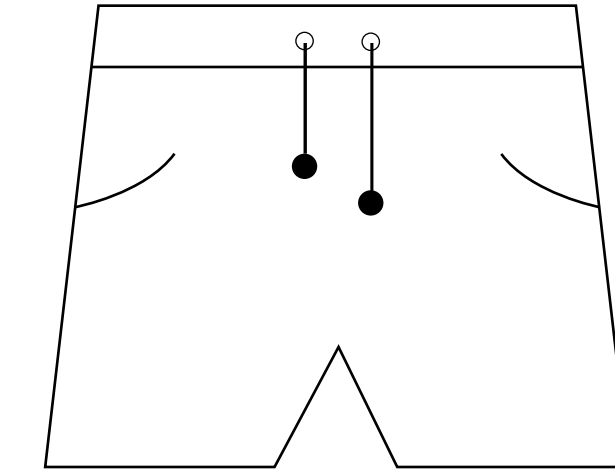


Trapeze Dress

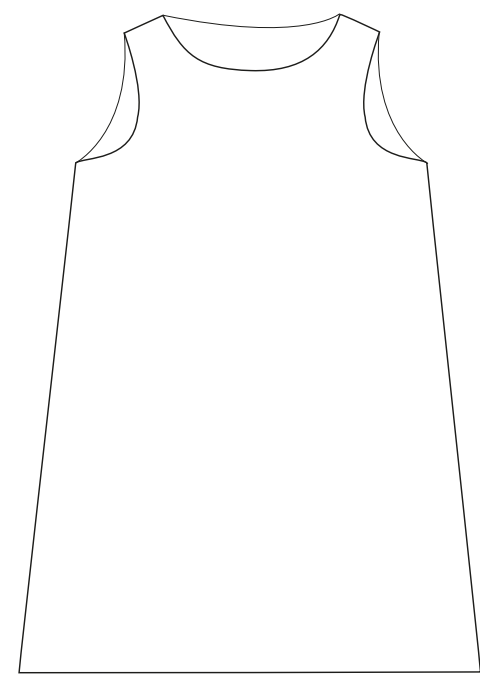
strapless
swimsuit



measurements
take your measuring tape!
just... to be sure before ordering



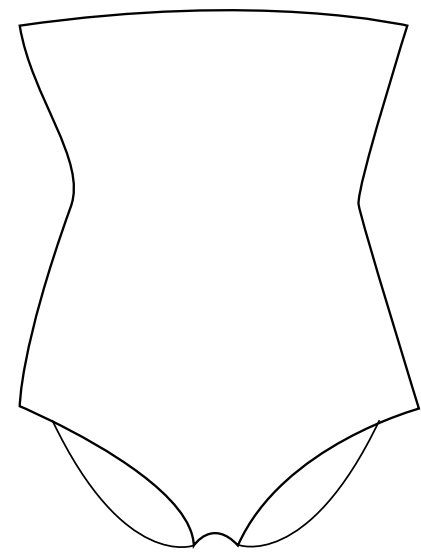
shorty
swimwear



cm poitrine/chest
taille/waist
hanches/hips

	FR	S	M	L	XL
	UK	(34-36)	(38-40)	(42)	(44-46)
	US	(6-8)	(10-12)	(14)	(16-18)
		(2-4)	(6-8)	(10)	(12-14)
		76-86	86-94	94-102	102-106
		55-66	66-76	76-78	78-88
		82-92	92-100	100-104	104-112

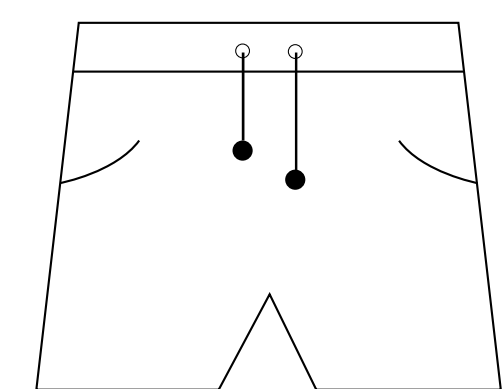
the trapeze dress sublimates
the body without revealing it.
Sizes are determined by
chest circumference



cm poitrine/chest
taille/waist
hanches/hips

	FR	S	M	L	XL	XXL
	UK	(32-34)	(36-38)	(40-42)	(44-46)	(48-50)
	US	(6-8)	(10-12)	(14)	(16-18)	(20-22)
		(2-4)	(6-8)	(10)	(12-14)	(16-18)
		80-88	88-96	96-104	104-112	112 - 124
		62-70	70-78	78-86	86-94	94 - 106
		87-95	95-103	103-111	111-119	119 - 131

women's strapless swimsuits
fit classically and normally.



cm taille/waist

	XS	S	M	L	XL	XXL
	71-76	76-81	81-86	86-91	91-96	96 - 104

men's shorty swimsuits
fit classically and normally.

à vos mètres!
Juste... pour être sûre avant de commander!